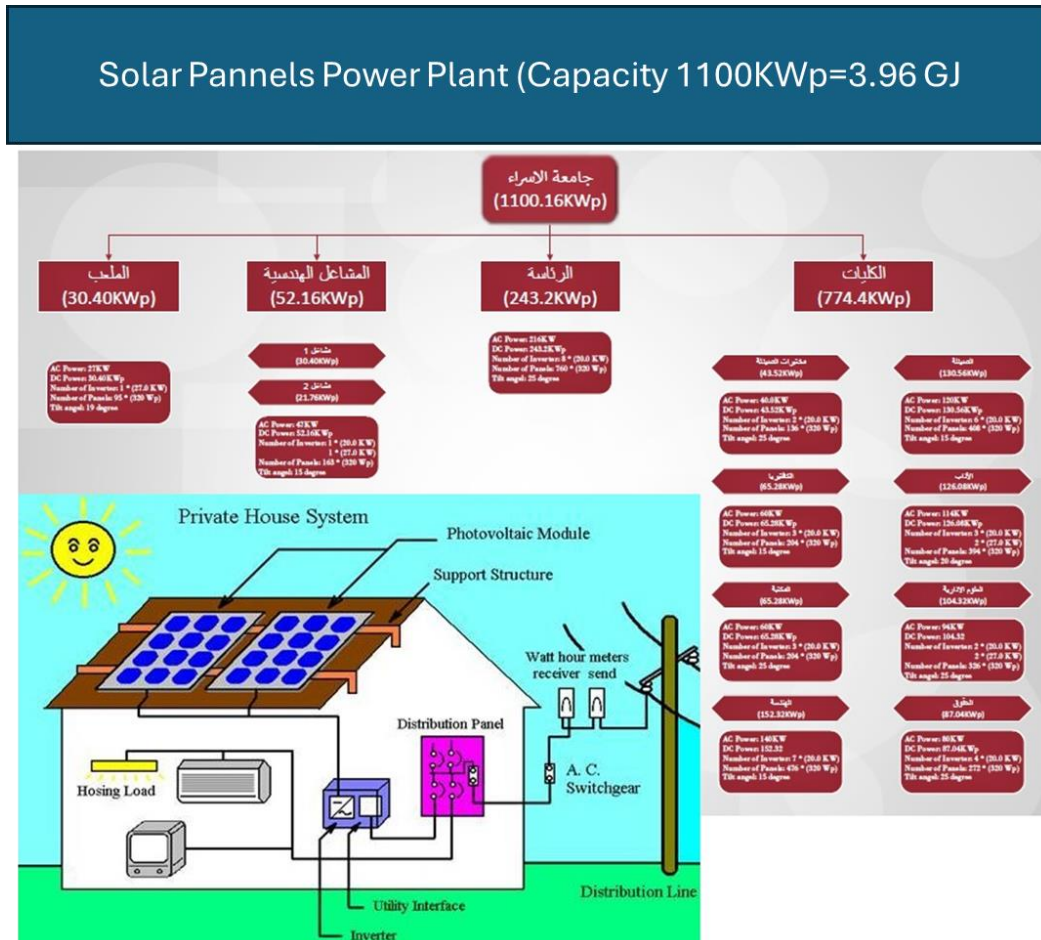


7.2.2 Upgrade buildings to higher energy efficiency

As per IU policy and procedure, all new building and renovations should focus of high quality green buildings and production of green energy, water treatment projects, recycling solid waste among others. Following are some examples.

- A- The substantial investment worth 640,000 JD (901.44 USD) in establishing a solar power stations with a capacity of Kwp 1,100 (3.96 GJ) which are distributed over 8 faculties, the main administration building, the engineering workshops and the stadium (Evidence 7.2.2-1) and the following- [IU solar plant](#)





- B- In late 2023, with the expansion of the university buildings and the establishment of the innovation centre, the university signed an agreement to expand the solar plant for an additional 120KWp and regular maintenance that will start in 2024. (Evidence Attached [7.2.2](#), [7.2.2-2](#)).
- C- Change all curtains of classrooms to energy efficient curtains that filter out filter out sunlight and provide insulation which is advantages during spring and summer where temperature could rage to 40 °C.
- D- Change all light bulbs to throughout the building to LED bulbs that is energy efficient.
- E- All corridors in the main faculties were made with glass ceiling to allow sunlight to enter and hence reduce energy consumption.